

MONTHLY MEMBERSHIP PROGRESS REPORT

District 202 E

Results as of: 7/31/2024

GMT:

LOCATION NEW ZEALAND

GMT CA

| Clubs | | | |
|-----------------------|---------------|-----------|---------------|
| RESULTS FOR 2024-2025 | | | |
| QUARTER | NEW CLUB GOAL | NEW CLUBS | DROPPED CLUBS |
| JULY/AUG/SEPT | 0 | 0 | 0 |
| OCT/NOV/DEC | 1 | 0 | 0 |
| JAN/FEB/MAR | 0 | 0 | 0 |
| APR/MAY/JUNE | 0 | 0 | 0 |

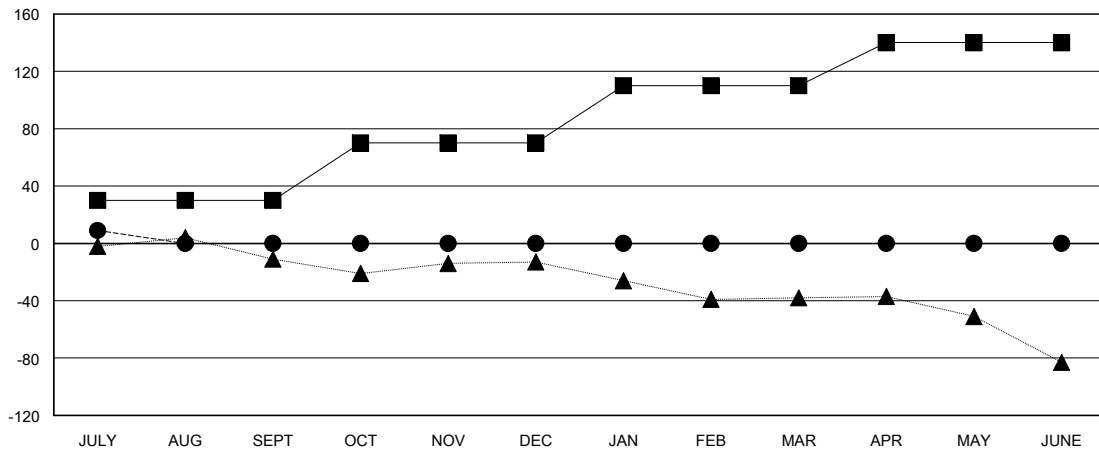
| Members | | | |
|-----------------------|------------------------|----------------------|--|
| RESULTS FOR 2024-2025 | | | |
| QUARTER | MEMBER GROWTH NET GOAL | MEMBER GROWTH ACTUAL | DROPPED MEMBERS ACTUAL (including transfers) |
| JULY/AUG/SEPT | 30 | 38 | 20 |
| OCT/NOV/DEC | 40 | 0 | 0 |
| JAN/FEB/MAR | 40 | 0 | 0 |
| APR/MAY/JUNE | 30 | 0 | 0 |

GOALS AND ACTUAL NEW CLUBS CUMULATIVE



- - CURRENT YEAR GOALS FOR NEW CLUBS
- - CURRENT YEAR ACTUAL NEW CLUBS
- ▲ - LAST YEAR ACTUAL NEW CLUBS

GOALS AND ACTUAL MEMBERS CUMULATIVE



- - MEMBER GROWTH NET GOAL
- - MEMBER GROWTH ACTUAL
- ▲ - LAST YEAR MEMBERSHIP ACTUAL

| | | |
|---|---|--|
| DROPPED CLUBS: 0 | 7 CLUBS OF 41 ADDED 1 OR MORE NEW MEMBERS | GENDER DISTRIBUTION MALE 776 (69.47%) FEMALE 341 (30.53%) |
| DROPPED MEMBERS DECEASED 4 CLUB CANCELLED 0 OTHER 16 TOTAL 20 | CLICK HERE FOR CUMULATIVE MEMBERSHIP DATA | TOTAL FAMILY UNIT MEMBERS 59 FAMILY MEMBERS PAYING HALF DUES 31 |